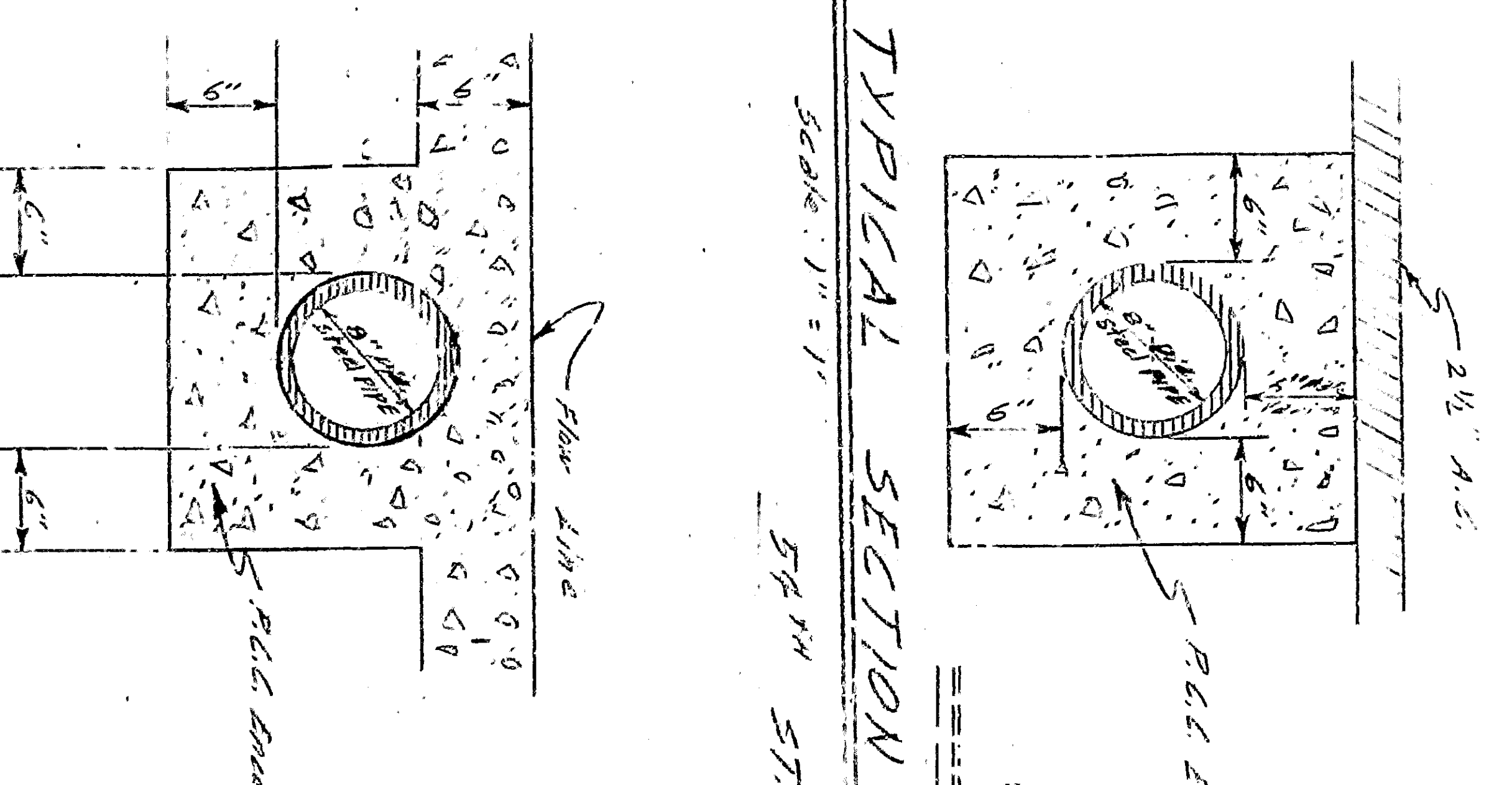


SCALE: HORIZ. 1"=20'
VERT. 1"=4'

- NOTES:**
1. Remove approximately 20' of existing pipe and replace with new 8" steel pipe furnished by user from local water co. (should be replaced by 8" steel pipe).
 2. Connect each end of the 8" steel pipe to existing 8" pipe as per section from the east and terminate same with a 12" x 12" manhole.
 3. Contact the local San Bernardino county water department for the line to be connected to existing 8" pipe and for the line to be connected to the 8" pipe.

TYPICAL SECTION



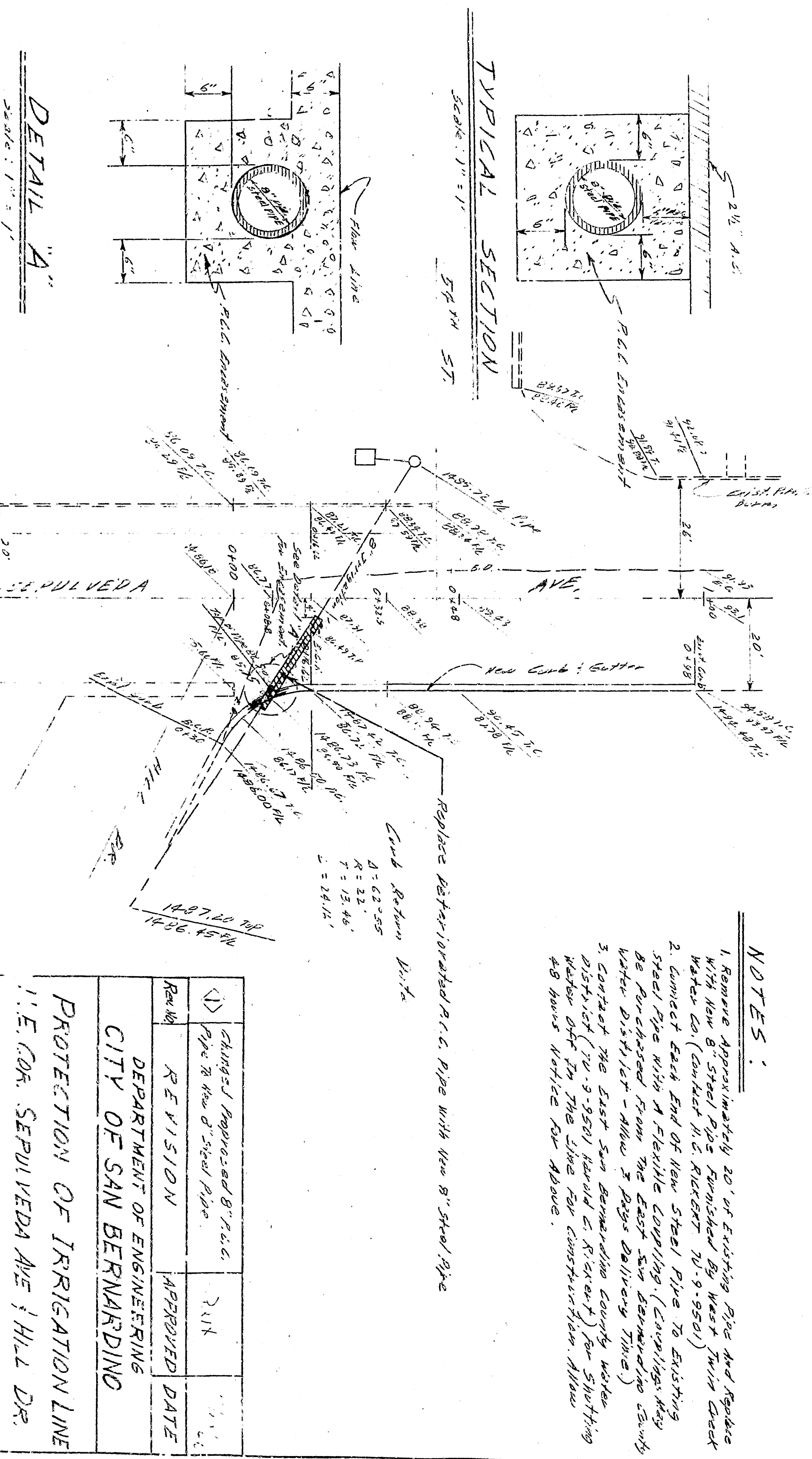
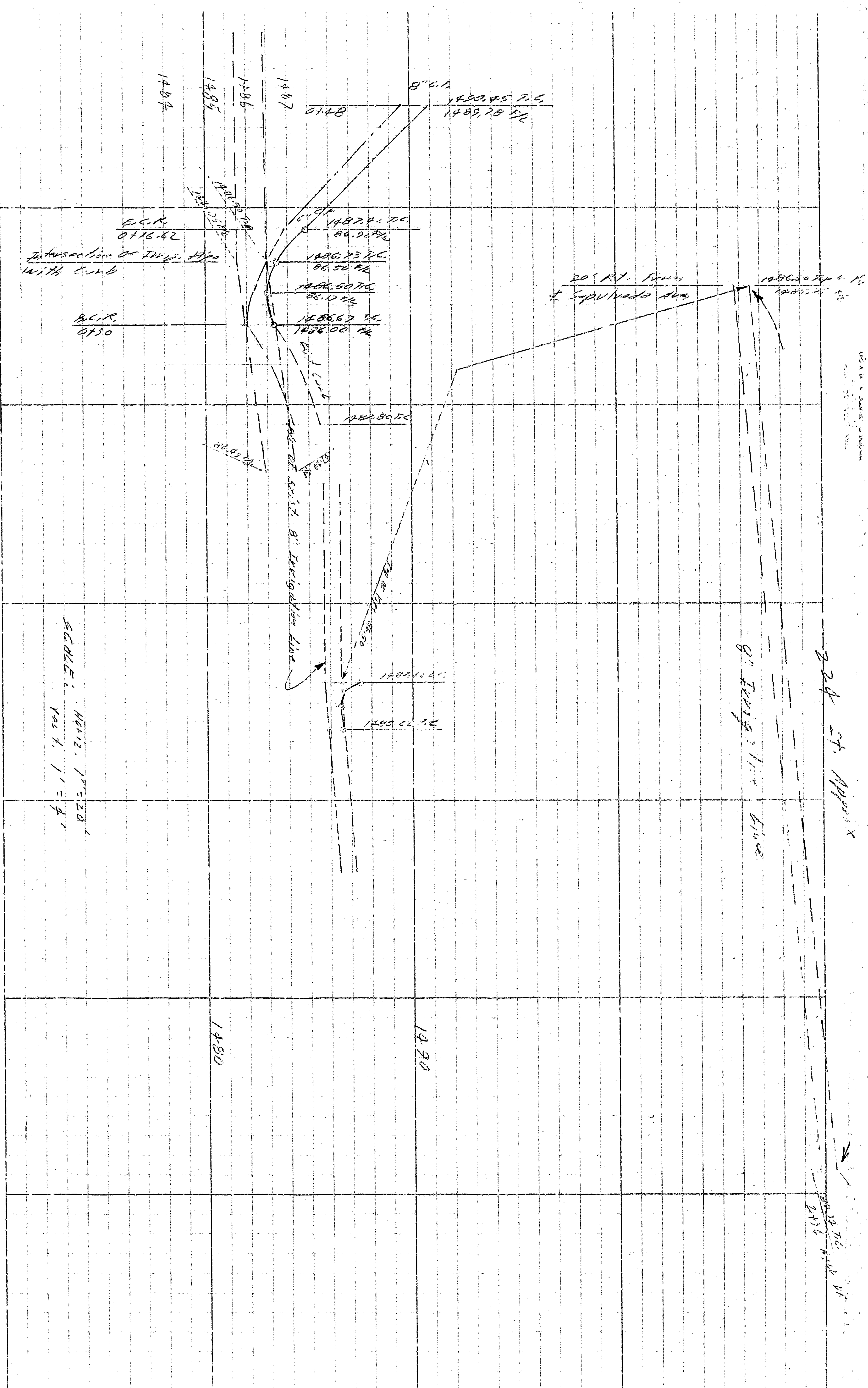
DETAIL "A"



REVISION	APPROVED DATE
1. Change proposed 8" dia. pipe to 6" dia. steel pipe	7/1/81

DEPARTMENT OF ENGINEERING
 CITY OF SAN BERNARDINO
 PROTECTION OF IRRIGATION LINE
 I. E. COR. SEPULVEDA AND HILL DR.

APPROVED: [Signature]
 DRAWING NO. [Number]
 CHECKED BY: [Name]
 DESIGNED BY: [Name]



- NOTES:**
1. Remove approximately 20' of existing pipe and replace with new 6" steel pipe furnished by user from local water co. (should be replaced by 8" steel pipe).
 2. Connect each end of the existing 6" pipe to the new 6" pipe by means of a 6" x 6" x 1/2" flange and nut and washer. The flange should be placed on the existing pipe and the nut and washer on the new pipe. Allow 1 foot between flanges.
 3. Contact the local San Bernardino county water department for the location of the existing 6" pipe and the location of the new 6" pipe.

APPROVED	DATE	APPROVED	DATE
<i>[Signature]</i>	3/15/53	<i>[Signature]</i>	3/15/53
CHECKED BY	DATE	CHECKED BY	DATE
<i>[Signature]</i>	3/15/53	<i>[Signature]</i>	3/15/53

DEPARTMENT OF ENGINEERING
 CITY OF SAN BERNARDINO
 PROTECTION OF IRRIGATION LINE
 I. E. COR. SEPULVEDA AND HILL DR.